



## Short form catalogue Twin-rod cylinders Series QX



Air that moves the world

**Camozzi spa**  
**Società Unipersonale**  
Via Eritrea, 20/I  
25126 Brescia  
**Italy**  
Tel. int.+39+030+37921  
Fax int.+39+030+2400430  
info@camozzi.com  
www.camozzi.com

**Camozzi GmbH Pneumatic**  
Porschestrasse 1  
73095 Albershausen  
**Germany**  
Tel. int.+49+7161+910100  
Fax int.+49+7161+9101099  
info@camozzi.de  
www.camozzi.de

**Camozzi GmbH Pneumatic**  
Löfflerweg 18  
A-6060 Hall in Tirol  
**Austria**  
Tel. int.+43+5223+52888-0  
Fax int.+43+5223+52888-500  
info@camozzi.at  
www.camozzi.at

**Camozzi Pneumatics Ltd.**  
The Fluid Power Centre  
Watling Street  
Nuneaton - Warwickshire  
CV 11 6BQ  
**Great Britain**  
Tel. int.+44+24+7637 4114  
Fax int.+44+24+76347520  
www.camozzi.co.uk  
info@camozzi.co.uk

**Camozzi Pneumatique**  
5, Rue Louis Gattefossé  
Parc de la Bandonnière  
69800 Saint Priest  
**France**  
Tel. int.+33+478+213408  
Fax int.+33+472+280136  
info@camozzi.fr  
www.camozzi.fr

**Camozzi Benelux B.V.**  
De Vijf Boeken 1 A  
2911 BL Nieuwerkerk a/d IJssel  
**The Netherlands**  
Tel. int.+31+180+316677  
Fax int.+31+180+316616  
info@camozzi.nl  
www.camozzi.nl

**Camozzi Pneumatik AB**  
Box 9214  
Bransyegatan 7  
20039 Malmö  
**Sweden**  
Tel. int.+46+40+222580  
Fax int.+46+40+223878  
info@camozzi.se  
www.camozzi.se

**Camozzi Aps**  
Metalvej 7a  
4000 Roskilde  
**Denmark**  
Tel. int.+45-46-750202  
Fax int.+45-46-750203  
info@camozzi.dk  
www.camozzi.dk

**Camozzi Pneumatic Ltd.**  
Floor 14, Leningradskaya Street, 1-A  
Himki, Moscow Region  
141400 Moscow  
**Russian Federation**  
Tel. int.+7+495+2306961  
Fax int.+7+495+5754564  
info@camozzi.ru  
www.camozzi.ru

**Camozzi-Pneumatic**  
38 Larionova St  
95018 Simferopol  
**Ukraine**  
Tel. int.+380+652+518198  
Fax int.+380+652+515700  
info@camozzi.com.ua  
www.camozzi.ru

**Camozzi Pneumatic**  
Korbusheva St. 2 Off. 412  
246029 Gomel  
**Byelorussia**  
Tel. int.+375+232478064  
Fax int.+375+232478417  
camozzi@mail.gomel.by

**Camozzi Pneumatic Kazakhstan LLP**  
17, Naurizbai Batir Street, office 102  
050004, Almaty  
**Kazakhstan**  
Tel/Fax int.+7+3272-445870/71  
info@camozzi.kz

**Camozzi Pneumatics Inc.**  
2160 Redbud Blvd., TX 75069  
P.O. Box 2386, TX 75070  
McKinney - Texas  
**U.S.A.**  
Tel. int.+1+972+548-8885  
Fax int.+1+972+548-2110  
info@camozzi-usa.com  
www.camozzi-usa.com

**Camozzi Neumatica S.A. de C.V.**  
Av. Santa Ana 18  
Parque Industrial Lerma  
52000 Lerma  
**Mexico**  
Tel. int.+52-728-2854153  
Fax int.+52-728-2850861  
camozzi@camozzi.com.mx  
www.camozzi.com/mx

**Camozzi do Brasil Ltda.**  
Rua Estácio de Sá, 1042  
CEP 13080-010 Campinas SP  
**Brazil**  
Tel. int.+55-19-2137-4500  
Fax int.+55-19-2137-4530  
camozzi@camozzi.com.br  
www.camozzi.com/br

**Camozzi Neumatica S.A.**  
Prof. Dr. Pedro Chutro 3048  
1437 Buenos Aires  
**Argentina**  
Tel. int.+54+11+49110816  
Fax int.+54+11+49124191  
info@camozzi.com.ar  
www.camozzi.com/arg

**Camozzi Venezuela S.A.**  
Calle 146 con Av. 62  
N°146-180  
P.O.Box 529  
Zona Industrial Maracaibo  
Edo. Zulia  
**Venezuela**  
Tel. int.+58+261+7360216  
Fax int.+58+261+7360401  
info@camozzi.com.ve  
www.camozzi.com.ve

**Camozzi Iran Co. Ltd.**  
Motahari Ave. No. 243  
Teheran  
**Iran**  
Tel. int.+9821-88732130  
Fax int.+9821-88738552  
adm-camir@safineh.net  
www.camozzi.com/ir

**Shanghai Camozzi Pneumatic Control Components Co, Ltd.**  
415, Ren De Road  
200434 Shanghai  
**China**  
Tel. int.+86+21+65363650  
Fax int.+86+21+65360613  
info@camozzi.com.cn  
www.camozzi.com/cn

**Shanghai Camozzi Automation Control Co, Ltd.**  
717, Shuang Dan Road,  
Malu Town  
201801 Jiading Ind. District  
Shanghai  
**China**  
Tel. int.+86+21+59100999  
Fax int.+86+21+59100333  
info@camozzi.com.cn  
www.camozzi.com/cn

**Camozzi India Private Limited**  
C-130 Phase II Ext., Hosiery Complex  
Noida - 201 305  
(uttar Pradesh) **India**  
Tel. int.+91+120+2560 061-65  
Fax int.+91+120+2568 866  
info@camozzi-india.com  
www.camozzi.com/in

**Camozzi Malaysia SDN BHD**  
30, Jalan Pemberita, U1/49  
Seksyen U1  
Temasya Industrial Park  
40150 Shah Alam  
**Malaysia**  
Tel. int.+60+3+55690173  
Fax int.+60+3+55690171  
camozzi@myjaring.net

### Technical assistance

Technical information  
Special products  
Tel. +39+030+3792390  
service@camozzi.com

Technical information  
Product information  
Site visit request  
Tel. +39+030+3792790  
service@camozzi.com



New

## Twin-rod cylinders Series QX

Double-acting, magnetic, guided  
 ø 10x2, 16x2, 20x2, 25x2, 32x2



- » High force
- » Precise movement
- » Integrated guide

The Series QX offers a range of actuators covering a great number of applications which require a guided linear movement. The design of the double piston, besides assuring a solid and effective guide, offers double force in compact dimensions. Where a high force with precise movement is required, along with a non-rotation function and integrated guide, the QX cylinders are the ideal solution. The QX Series offers two guide versions, with sintered bronze bushes or with linear ball bushings.

### General characteristics

Type of construction	with double guide with double flanges QXT = sintered bronze bushes QXB = linear ball bearings
Operation	double acting, magnetic
Materials	anodized aluminium body and flange rolled stainless steel AISI 303 piston rod for QXT hardened steel C50 piston rod for QXB
Mounting	threaded and non threaded holes in the body
Min. and max. stroke	from 10 to 100
Operating temperature	0° - 80°C (with dry air -20°C)
Speed	50 - 500mm/s

### PNEUMATIC CHARACTERISTICS

Operating pressure	1 ÷ 10 bar
Fluid	clean air, non lubricated*

\*in the event that lubricated air is used, it is recommended to use oil ISO VG32. Once applied, the lubrication should never be interrupted.

### TABLE SHOWING THE STANDARD STROKES FOR TWIN-ROD CYLINDERS SERIES QX

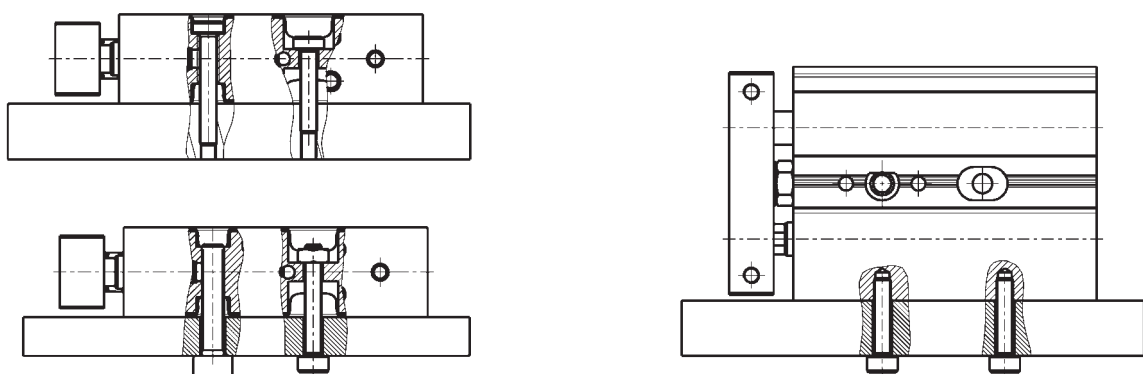
Standard strokes	10	20	30	40	50	75	100
ø 10	■	■	■	■	■	■	■
16	■	■	■	■	■	■	■
20	■	■	■	■	■	■	■
25	■	■	■	■	■	■	■
32	■	■	■	■	■	■	■

### CYLINDER CODING

**QX T2A 020 A 050**

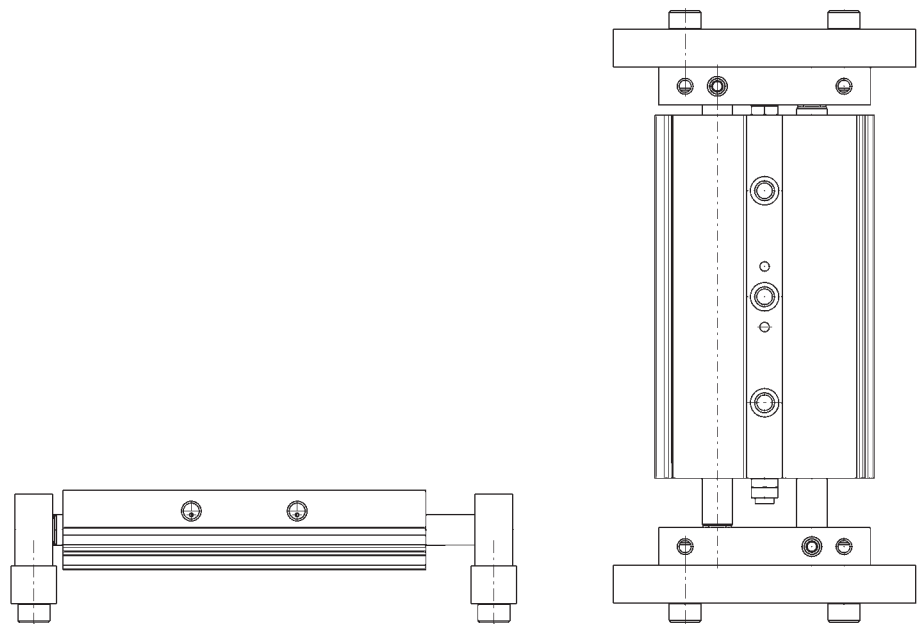
<b>QX</b>	» SERIES
<b>T</b>	» VERSION T = sintered bronze bushes B = linear ball bearings
<b>2</b>	» OPERATION 2 = double-acting (1 flange) radial pressure supply 3 = through-rod (double-flange), radial pressure supply 8 = double-acting (1 flange), axial pressure supply
<b>A</b>	» MATERIALS A = anodized aluminium body, rolled stainless steel 303 piston rod
<b>020</b>	» BORE ø 10 mm ø 16 mm ø 20 mm ø 25 mm ø 32 mm
<b>A</b>	» TYPE OF DESIGN A = standard
<b>050</b>	» STROKE see table

Fixing examples with the flange in motion

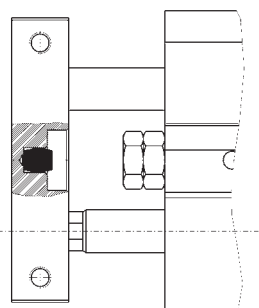


To mount the sensors of QX cylinders  $\varnothing 10$  in the middle grooves, it is advisable to use M3 screws UNI 9327 and nuts M3 UNI 5923.

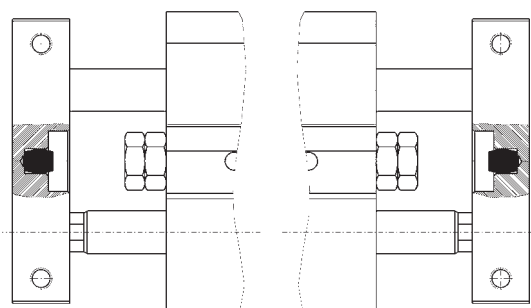
Fixing examples with the cylinder body in motion



Mechanical regulation of the end position/stroke

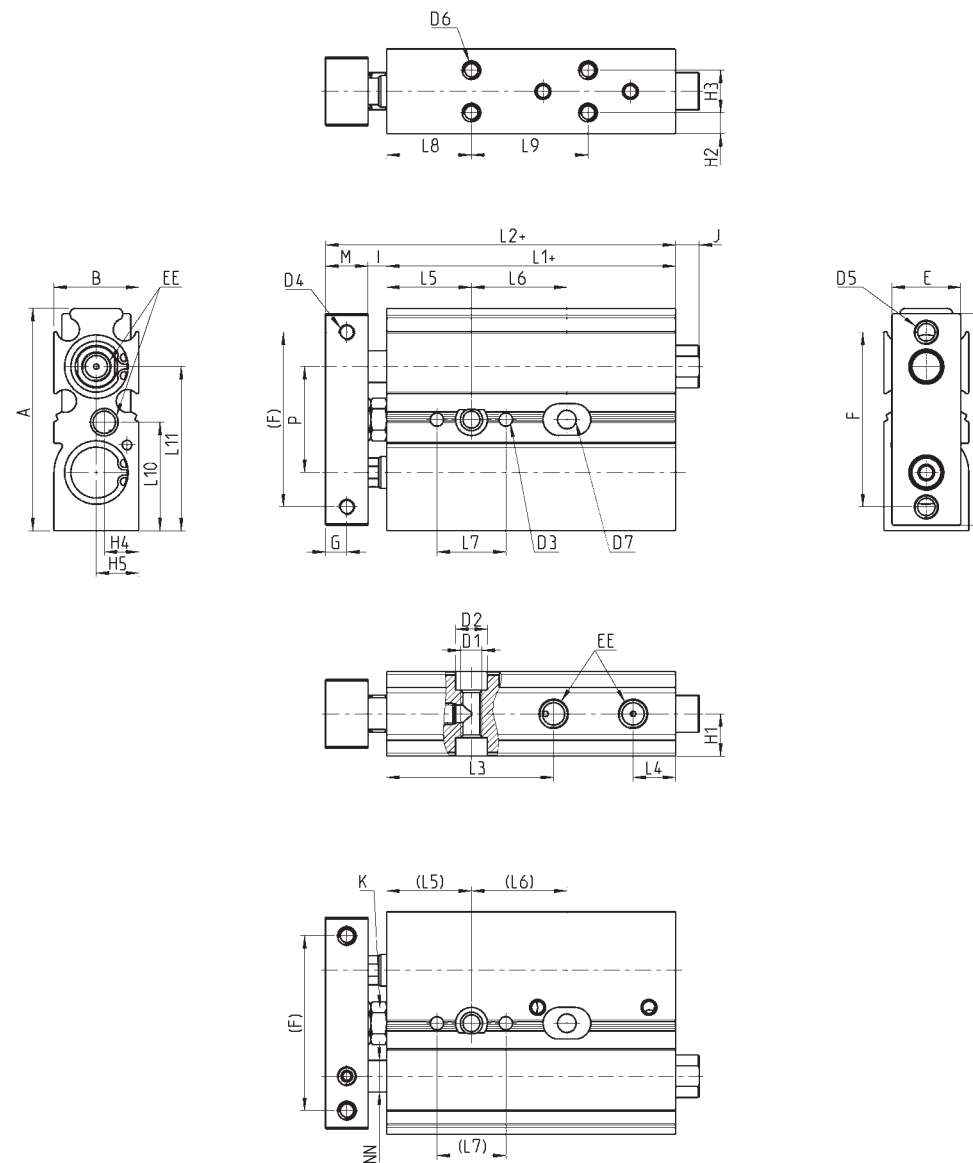


The front regulation screw allows the adjustment of the stroke up to  $-10\text{mm}$ .



The front regulation screws allow the adjustment of the stroke up to  $-10\text{mm}$  on each side.

Cylinders Series QX...



DIMENSIONS																						
$\varnothing$	A	B	C	E	F	G	I	M	L1	L2	L3	L4	L5	L6				L7	L8			
														STROKE				$\pm 0,05$				
														10	20	30	40	50	75	100		
10	42	16	40	13	33	4	3,5	8	54,5	66	31,5	8	16	18	28	38	48	58	83	-	13	16
16	58	21	56	19	42	5	2,5	10	67,5	80	34	7,5	20	25	25	35	35	35	45	55	16	20
20	62	25	60	22	50	6	4,5	12	77,5	94	39,5	9	25	30	30	40	40	40	60	60	22	25
25	76	30	71	27	60	6	4,5	12	80,5	97	45,0	8	30	30	30	40	40	40	60	60	22	30
32	94	37	92	35	45	8	4,0	16	95,0	110,5	52,5	17,7	30	40	40	50	50	50	70	70	22	30

DIMENSIONS																														
$\varnothing$	L9						L10	L11	H1	H2	H3	H4	H5	D1	D2	D3	D4	D5	D6	D7	NN	EE	J	K	P					
														STROKE										$\pm 0,05$						
														10	20	30	40	50	75	100										
10	22	32	42	52	62	87	-	20,5	31	8	4	8	6,5	8	M4	6	2,5	M3	M4	M3	3,5	6	M5	4,5	7	20				
16	25	25	35	35	35	45	55	6	29	10,5	10,5	-	4,5	10,5	M5	7,5	2,5	M4	M5	M3	-	8	M5	-	7	25				
20	30	30	40	40	40	60	60	5	31	12,5	7,75	9,5	4,8	10,5	M8	10,5	5	M4	M5	M4	-	10	M5	-	8	29				
25	30	30	40	40	40	60	60	5	38	15,0	8,5	13,0	8,5	15,0	M8	10,5	5	M5	M6	M5	-	12	M5	-	8	35				
32	40	40	50	50	50	70	70	47	47	18,5	8,5	20,0	8,5	28,5	M8	10,5	5	M5	M6	M5	-	16	G1/8	-	10	40				

