

Guide Series 45

for cylinders DIN/ISO 6432

ø20 - 25

for cylinders DIN/ISO 6431

ø32 - 40 - 50 - 63 - 80 - 100

The Series 45 Guides have been developed in order to prevent piston rod rotation and can support possible radial loads.

Series 45 Guides are available in three different models depending on the applicable loads. The UT and HT guides with crawling supports are self lubricating, while HB guides have a ball bush. Series 45 guides can be used with all cylinders DIN/ISO 6432 of ø20 and ø25 and DIN/ISO 6431 of ø32 ÷ 100. Refer to the graphs to ensure the right choice of the loads in relation to the stroke. The shorter the stroke the higher will be the applicable loads.



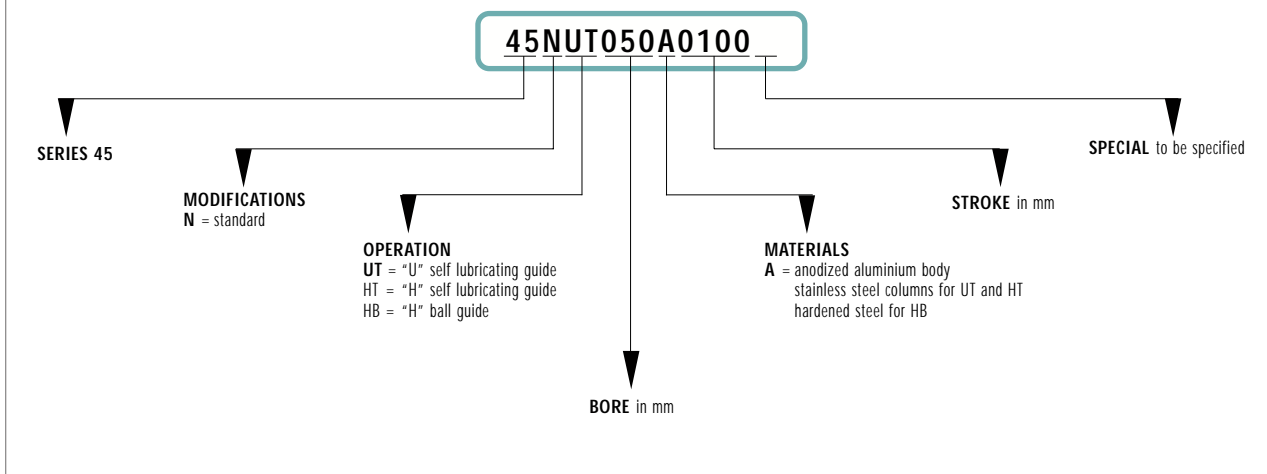
- ▶ To be used with VDMA/ISO cylinders
- ▶ Available as ball bearing guide and self lubricating guide
- ▶ Highly adaptable

GENERAL DATA

Type of construction	U and H
Operation	NUT and NHT without lubrication NHB requires lubrication
Material	anodized aluminium body stainless steel and hardened steel rods stainless steel flexible coupling anodized aluminium plate
Assembly	by means of threaded holes
Installation	in any position



EXAMPLE OF GUIDES' CODING



STANDARD STROKES TABLE

Serie	ø	Strokes available in stock							
		50	100	160	200	250	320	400	500
45	20	■	■	■	■				
45	25	■	■	■	■				
45	32	■	■	■	■	■	■	■	■
45	40	■	■	■	■	■	■	■	■
45	50	■	■	■	■	■	■	■	■
45	63	■	■	■	■	■	■	■	■
45	80		■		■		■		■
45	100		■		■		■		■

GRAPH SHOWING THE USEFUL APPLICABLE LOADS ON 45 NUT GUIDES DEPENDING ON PROJECTION

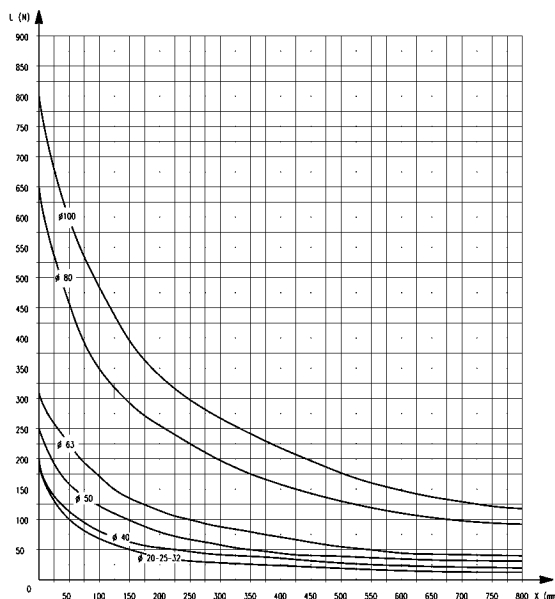
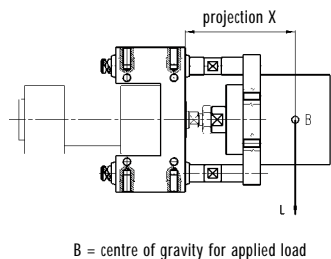
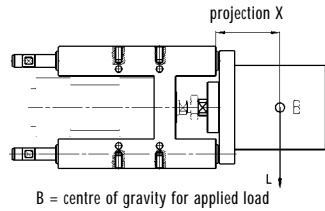


Diagram N.1 - "U" Guide moving on bush (NUT)

GRAPH SHOWING THE USEFUL APPLICABLE LOADS ON 45 NUT GUIDES DEPENDING ON PROJECTION



B = centre of gravity for applied load

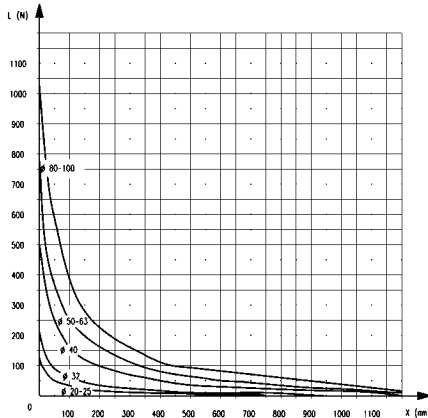


Diagram N.2 - "HB" guide with linear ball bearing (45 NHB)

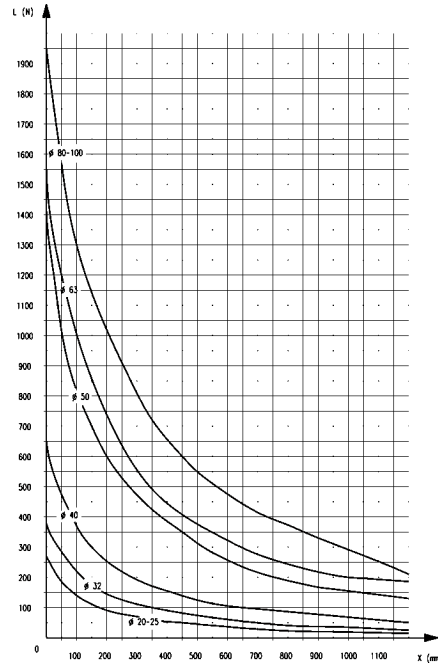


Diagram N.3 - "HT" Guide moving on bush (45 NHT)

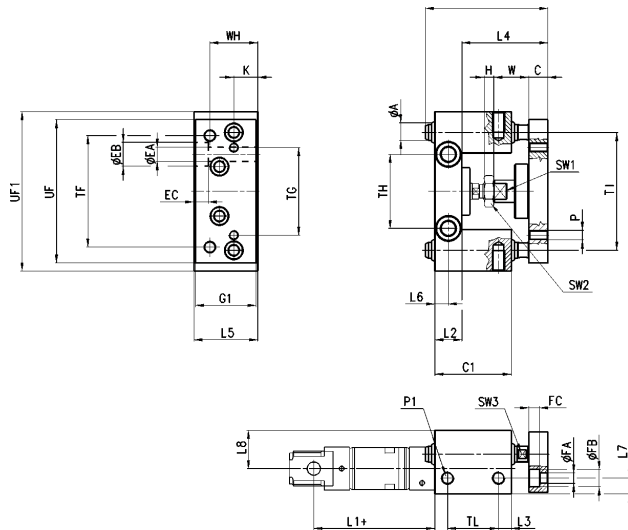
Cylinders Mod. 45NUT...

Guide suitable for cylinders Series 24 and 25

DIN/ISO 6432, ø 20 and 25.

For applicable loads see graph No. 1.

These guides do not need lubrication.



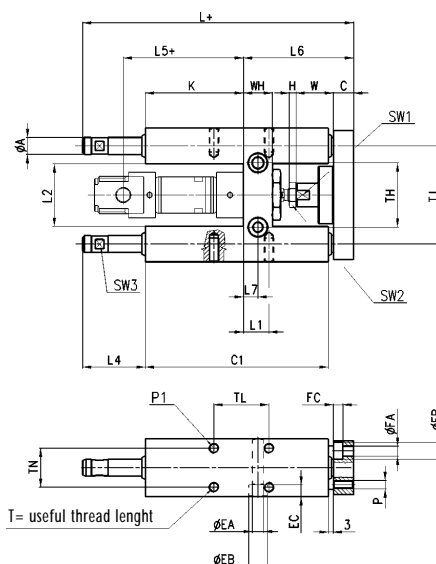
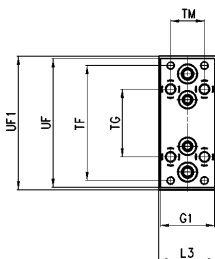
DIMENSIONS

ø cyl.	TF	TG	TH	TI	TL	UF1	UF	G1	A	WH	C1	H	W	C	K	L	L1	L2	L3	L4	L5	L6	L7	L8	P	PI	EA	EB	EC	FA	FB	FC	SW1	SW2
20	70	55	46.5	74	32	100	90	38	10	30	48	4	22	12	15	77	71	17	8	48 ⁺²	40	8.5	10	24	M6	M8	9	15	9	6.5	11	6.8	13	13
25	70	55	46.5	74	32	100	90	38	10	30	48	6	22	12	15	77	76	17	8	54 ⁺²	40	8.5	10	24	M6	M8	9	15	9	6.5	11	6.8	13	17



Cylinders Mod. 45NHT...

Guide suitable for cylinders Series 24 and 25,
DIN/ISO 6432, \varnothing 20 and 25.
For applicable loads, see graph No. 3.
These guides do not need lubrication.

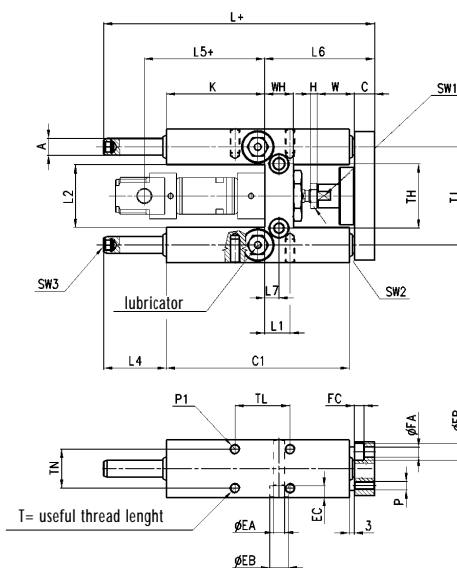
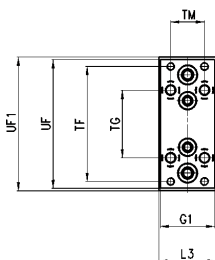


DIMENSIONS

\varnothing cyl.	TF	TG	TH	TI	TL	TM	TN	UF	G1	UF1	A	WH	C1	H	W	C	K	L	L1	L2	L3	L4	L5	L6	L7	P	P1	T	EA	EB	EC	FA	FB	FC	SW1	SW2
20	68	40	38	58	32.5	20	23	76	32	79	10	17	108	4	22	12	58	160	15	37 ^{+0.3}	34	37	71	65 ⁺⁵	8.5	M5	M6	14	6.5	11	6.8	5.5	10	5.7	13	13
25	68	40	38	58	32.5	20	23	76	32	79	10	17	108	6	17	12	58	160	15	37 ^{+0.3}	34	37	76	65 ⁺⁵	8.5	M5	M6	14	6.5	11	6.8	5.5	10	5.7	13	17

Cylinders Mod. 45NHB...

Guide suitable for cylinders Series 24 and 25
DIN/ISO 6432, \varnothing 20 and 25.
For applicable loads, see graph No. 2.
To lubricate these guides, use the special lubricator.

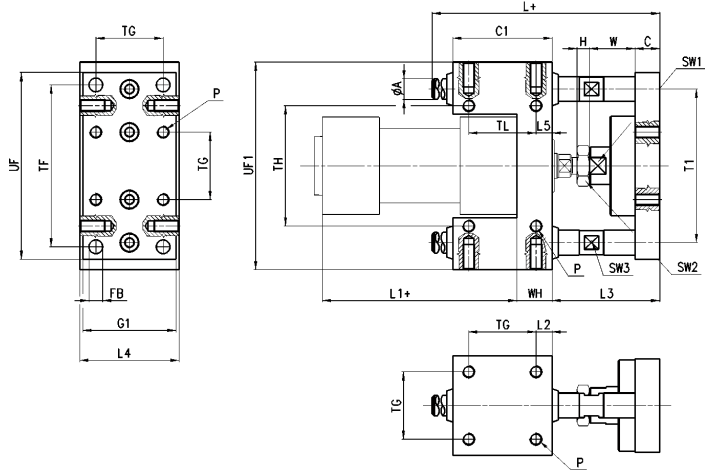


DIMENSIONS

\varnothing cyl.	TF	TG	TH	TI	TL	TM	TN	UF	G1	UF1	A	WH	C1	H	W	C	K	L	L1	L2	L3	L4	L5	L6	L7	P	P1	T	EA	EB	EC	FA	FB	FC	SW1	SW2
20	68	40	38	58	32.5	20	23	76	32	79	10	17	108	4	22	12	58	160	15	37 ^{+0.3}	34	37	71	65 ⁺⁵	8.5	M5	M6	14	6.5	11	6.8	5.5	10	5.7	13	13
25	68	40	38	58	32.5	20	23	76	32	79	10	17	108	6	17	12	58	160	15	37 ^{+0.3}	34	37	76	65 ⁺⁵	8.5	M5	M6	14	6.5	11	6.8	5.5	10	5.7	13	17

Cylinders Mod. 45NUT...

Guide suitable for cylinders Series 40 and 41
 DIN/ISO 6431, ø 32, 40, 50, 63, 80 and 100.
 For applicable loads, see graph No. 1
 These guides do not need lubrication.

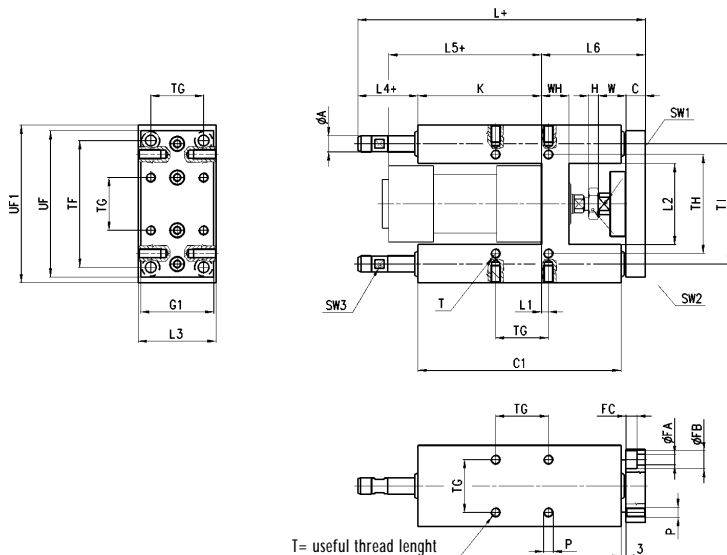


DIMENSIONS

ø cyl.	TF	TG	TH	A	T1	P	FB	UF	G1	UF1	L	C1	H	W	C	L1	WH	L2	L3	L4	L5	TL	SW1	SW2
32	78	32.5	58	12	74	M6	6.6	90	45	100	106	48	6	22	12	94	17	7.8	52 ⁺²	48	7.8	32.5	15	17
40	84	38	64	12	80	M6	6.6	100	50	106	117	58	7	22	12	105	21	10	53 ⁺²	56	10	38	15	19
50	100	46.5	80	16	96	M8	9	120	60	125	129	59	8	26	15	106	25	6.2	64 ⁺⁴	66	6.3	46.5	22	24
63	105	56.5	95	16	104	M8	9	125	70	132	146	76	8	26	15	121	25	9.8	64 ⁺⁴	76	9.8	56.5	22	24
80	130	72	130	20	130	M10	11	155	90	165	170	90	9	32	16	128	34	9	72 ⁺⁶	98	20	50	27	30
100	150	89	150	20	150	M10	11	175	110	185	190	110	9	32	16	138	39	10.5	72 ⁺⁶	118	20	70	27	30

Cylinders Mod. 45NHT...

Guide suitable for cylinders Series 40 and 41
 DIN/ISO 6431, ø 32, 40, 50, 63, 80 and 100.
 For applicable loads, see graph No. 3.
 These guides do not need lubrication.



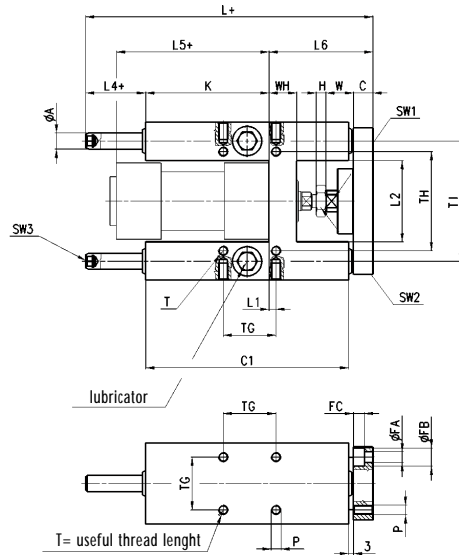
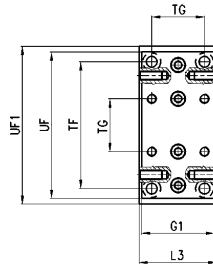
DIMENSIONS

ø cyl.	TF	TG	TH	T1	UF	G1	UF1	A	WH	C1	H	W	C	K	L	L1	L2	L3	L4	L5	L6	P	T	FA	FB	FC	SW1	SW2
32	78	32.5	61	74	90	45	97	12	17	125	6	17	12	76	177	4.3	50.2 ^{+0.4}	50	37	94	64 ⁺⁵	M6	14	6.5	11	6.8	13	17
40	84	38	69	87	110	54	115	16	21	140	7	22	12	81	192	11	58.2 ^{+0.4}	58	37	105	74 ⁺⁵	M6	14	6.5	11	6.8	15	19
50	100	46.5	85	104	130	63	137	20	26	149	8	26	15	78.5	205	19.8	70.2 ^{+0.4}	70	37.5	106	89 ⁺¹⁰	M8	16	9	15	9	22	24
63	105	56.5	100	119	145	80	152	20	26	182	8	26	15	111	237	15.3	85.2 ^{+0.4}	85	37	121	89 ⁺¹⁰	M8	16	9	15	9	22	24
80	130	72	130	148	180	100	189	25	34	215	9	32	20	128	280	21	105.4 ^{+0.6}	105	42	128	110 ⁺¹⁰	M10	20	11	18	11	27	30
100	150	89	150	172	200	120	213	25	39	220	9	32	20	128	280	24.5	130.4 ^{+0.6}	130	37	138	115 ⁺¹⁰	M10	20	11	18	11	27	30



Cylinders Mod. 45NHB..

Guide suitable for cylinders Series 40 and 41
 DIN/ISO 6431, ø 32, 40, 50, 63, 80 and 100.
 For applicable loads, see graph No. 2.
 To lubricate these guides, use the special lubricator.



DIMENSIONS

ø cyl.	TF	TG	TH	TI	UF	G1	UF1	A	WH	C1	H	W	C	K	L	L1	L2	L3	L4	L5	L6	P	T	FA	FB	FC	SW1	SW2
32	78	32.5	61	74	90	45	97	12	17	125	6	17	12	76	177	4.3	50.2 ^{+0.4}	50	37	94	64 ⁺⁵	M6	14	6.5	11	6.8	13	17
40	84	38	69	87	110	54	115	16	21	140	7	22	12	81	192	11	58.2 ^{+0.4}	58	37	105	74 ⁺⁵	M6	14	6.5	11	6.8	15	19
50	100	46.5	85	104	130	63	137	20	26	149	8	26	15	78.5	237	19.8	70.2 ^{+0.4}	70	69.5	106	89 ⁺¹⁰	M8	16	9	15	9	22	24
63	105	56.5	100	119	145	80	152	20	26	182	8	26	15	111	237	15.3	85.2 ^{+0.4}	85	37	121	89 ⁺¹⁰	M8	16	9	15	9	22	24
80	130	72	130	148	180	100	189	25	34	215	9	32	20	128	280	21	105.4 ^{+0.6}	105	42	128	110 ⁺¹⁰	M10	20	11	18	11	27	30
100	150	89	150	172	200	120	213	25	39	220	9	32	20	128	280	24.5	130.4 ^{+0.6}	130	37	138	115 ⁺¹⁰	M10	20	11	18	11	27	30